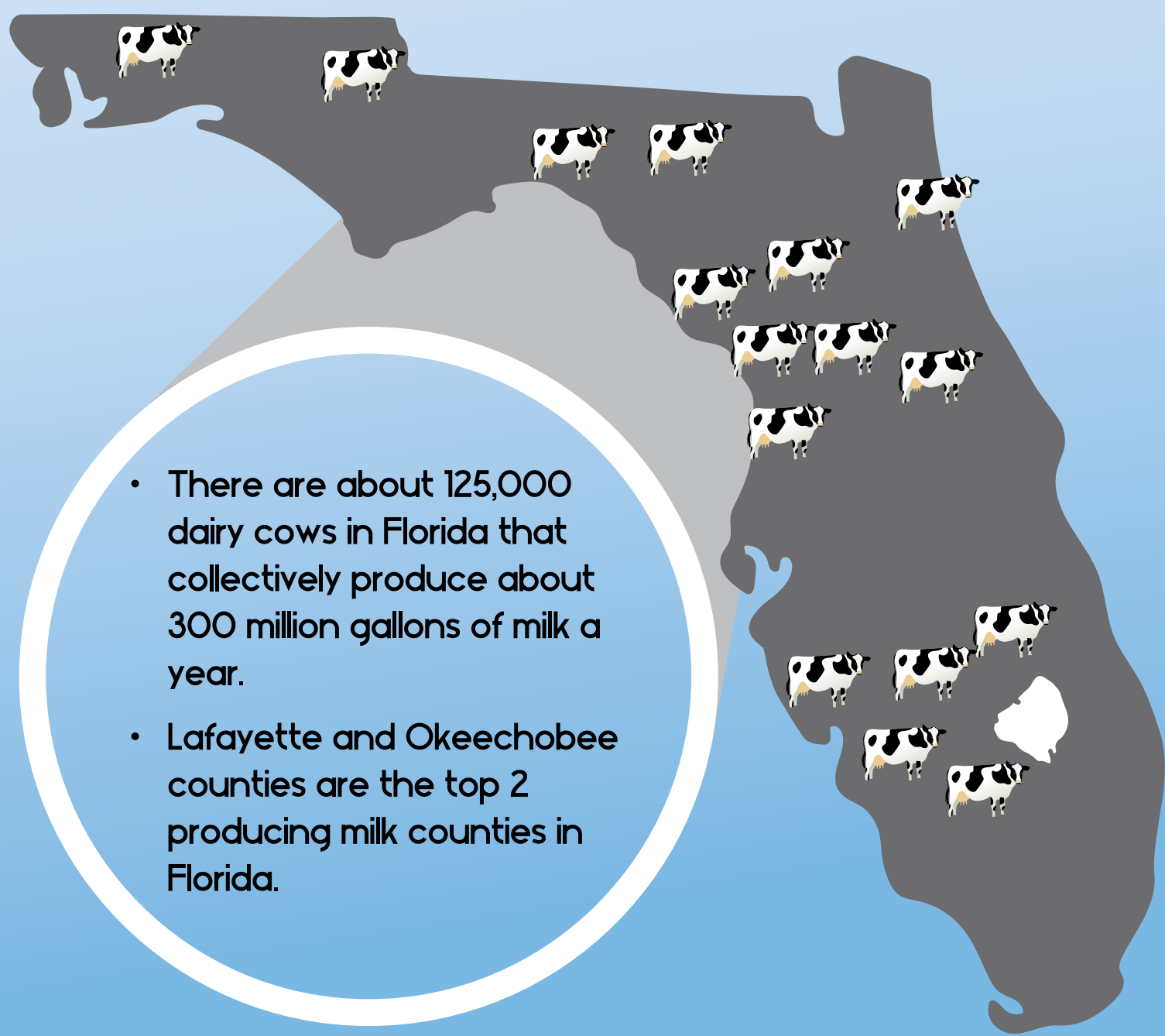


All About FLORIDA MILK



Where Are Florida Dairy Farms Located?



- There are about 125,000 dairy cows in Florida that collectively produce about 300 million gallons of milk a year.
- Lafayette and Okeechobee counties are the top 2 producing milk counties in Florida.

How Does Milk Go From The Cow To The Carton?



- Dairy farmers provide clean water, access to food and dry bedding for their cows, 24 hours a day.
- Dairy cows are milked 2-3 times a day in a milking parlor.
- A refrigerated tanker truck takes the milk from the farm to the processing plant.
- At the processing plant the milk is pasteurized, homogenized and packaged.
- For schools, milk is put into cartons and delivered 2-3 days after leaving the dairy farm.

Cow Nutrition: What Do Cows Eat?



Protecting The Environment

REUSE WATER

Dairy farmers use water responsibly and often recycle it to use on their crops or to clean their milking parlors and barns.

Quality water is essential on a dairy so farmers carefully manage their usage to ensure that they provide their cows with clean water, which contributes to high-quality milk.

REDUCE ENERGY

The dairy community has reduced the carbon footprint of milk by 63 percent in recent years by improving animal health programs, cow comfort and overall farm management practices.

Some dairy farms use anaerobic digester systems that convert manure into clean, renewable electricity, which can power their farms, their homes and their community.



Milk Facts

- Milk contains nutrients including calcium, potassium, protein and phosphorus.
- The protein naturally found in milk helps to build strong muscles.
- The water in milk can help keep you hydrated.

